

The Lafayette Marquee

4-H Newsletter

DECEMBER 2025

What is 4-H?

Whether your family has been part of 4-H for generations or you're brand new to our program, I want to take a moment to share what 4-H truly *is* at its core.

4-H is built on four simple ideas that help young people grow: **sparks**, **belonging**, **relationships**, and **engagement**.

- **Sparks** are the interests that excite young people.
- **Belonging** means being part of a group that welcomes and supports you.
- **Relationships** are the positive connections youth build with caring adults and peers.
- **Engagement** happens when youth get involved in hands-on learning and real experiences.

When youth take part in 4-H, they don't just learn new skills — they **thrive**. They develop socially, emotionally, and mentally. They learn to set goals, handle challenges, stay curious, build confidence, and discover a sense of purpose. They gain tools that support them in school, at home, and in their future.

Many people think 4-H is only about agriculture and livestock. While those projects are important and loved by many, 4-H is *much more*. It is about **positive youth development** — creating safe spaces where young people can grow, explore, and succeed, no matter their interests.

4-H is for **everyone**. You don't need a farm. You don't need experience. You just need a willingness to try something new. Maybe that looks like joining a local club, exploring a county-led workshop, attending a state-level trip, or becoming part of a youth leadership group. With so many options, there truly is **something for every young person in 4-H**.

Inside this issue:

Calendar	2
4-H Pledge & Creed	3
WI 4-H Movement	4
Lafayette County Offerings	5
Educational Experiences	6
WI 4-H Thriving Model	7
Explore: 4-H Edition	8
4-H Experience Series	9, 14
Cupcake Event	10
YQCA	11
SPARK DAYS	12-13
WI 4-H Opportunities	15-20
WI State 4-H	21
Contacts/Office Hours	22

CONTACT US:

Lafayette County Extension Office

700 Main Street, Suite #2

Darlington, WI 53530

608-776-4820

<https://lafayette.extension.wisc.edu>

Find Lafayette County UW

Extension on Facebook!

Hailee Kammerud,

4-H Youth Development Educator



Extension
UNIVERSITY OF WISCONSIN-MADISON

Calendar of Events

DECEMBER 2025

- 05 Explore: 4-H Edition @ McCoy Public Library
- 10 Explore: 4-H Edition @ Gratiot Annex Library
- 13 4-H Experience Series: Soap
- 19 Explore: 4-H Edition @ Johnson Public Library
- 24-25 Office—Closed
- 27 Cupcakes w/Kaitlyn
- 29 4-H Officer Training
- 30 YQCA Instructor Led Training
- 31 Office—Closed

JANUARY 2025

- 01 Office—Closed
- 05-12 4-H Record Books due to Extension Office
- 10 SPARK DAY—Pinatas
- 16 Explore: 4-H Edition @ McCoy Public Library
- 16 Explore: 4-H Edition @ Johnson Public Library
- 17 SPARK DAY— Wooden Signs
- 24 4-H Experience Series: Tallow

FEBRUARY 2025

- 07 SPARK DAY—
- 12 4-H 2025 Record Book Recognition
- 20 Explore: 4-H Edition @ Johnson Public Library
- 27 Explore: 4-H Edition @ McCoy Public Library

MARCH 2025

- 20 Explore: 4-H Edition @ McCoy Public Library
- 20 Explore: 4-H Edition @ Johnson Public Library
- 28 Day in the Arts

APRIL 2025

- 17 Explore: 4-H Edition @ McCoy Public Library

4-H Pledge & Creed



HEAD



HEART



HANDS



HEALTH

4-H PLEDGE

I pledge my head to clearer thinking,
My heart to greater loyalty,
My hands to larger service,
And my health to better living,
For my club, my community, my country, and
my world.

4-H Creed

I believe in 4-H Club work for the opportunity it will give me to become a useful citizen.

I believe in the training of my HEAD for the power it will give me to think, plan and to reason.

I believe in the training of my HEART for the nobleness it will give me to be kind, sympathetic and true.

I believe in the training of my HANDS for the ability it will give me to be helpful, skillful, and useful.

I believe in the training of my HEALTH for the strength it will give me to enjoy life, to resist disease, and to work efficiently.

I believe in my county, my state, and my community and in my responsibility for their development.





In all these things I believe, and am willing to dedicate my efforts to their fulfillment.

WHY 4-H?

#wi4hmovement



The Wisconsin 4-H MOVEMENT

I pledge my  head to clearer thinking, my  heart to greater loyalty, my  hands to larger service, and my  health to better living, for my club, my community, my country and my world.

In Wisconsin 4-H we value:

Being
Yourself



Find and share your
authentic sparks
and interests;

Belonging
Together



Recognize,
understand, respect,
and appreciate
each other;

Building
Connections



Grow positive
relationships with
peers and adults;

Discovering
Skills



Develop skills
through hands-on
learning to help you
succeed and thrive;

Exploring
New
Opportunities



Open the door to
new experiences,
projects and places;

Giving Back
to Your
Community



Make meaningful con-
tributions through
community service
and leadership.

BELONGING

MASTERY

INDEPENDENCE

GENEROSITY

To Make The
Best Better.



UW-MADISON EXTENSION

What Does Lafayette County 4-H Have to Offer?

SPARK DAYS (Monthly)!!

Fill the Floral Hall is now SPARK DAYS! Same spirit. Same creativity. Brand new name. We've grown beyond the walls of the Floral Hall—and now, we're lighting up every corner with imagination, color, and connection. SPARK DAYS captures the energy, joy, and inspiration that fills each moment of our events. We're here to ignite something special in everyone—keeping the SPARK alive!

4-H Experience Series

The 4-H Experience Series opens doors for youth to explore career aspirations and prepare for life beyond the classroom. By engaging with entrepreneurs across a range of industries—from small backyard businesses to established main street storefronts—youth will gain insight into the diverse opportunities within agriculture and local enterprise. Upcoming 4-H Experience Series events include, but are not limited to:

- Goat Milk Soap Making
- Tallow Body Butter
- Photography Shoot-Out Sessions
- Woollets (Wool Pellets)

Explore: 4-H Edition @ Libraries (Monthly)

4-H continues to provide youth-focused programming throughout the county, providing meaningful, hands-on learning experiences for youth in accessible community spaces, engaging with young people in new environments. This programming promotes and broadens exposure to 4-H SPARKS—helping youth discover their interests and potential through positive, informal learning experiences. Make sure the check out the Facebook page to see which libraries 4-H will be at for the month and what the focused hands-on experience will be!

****NEW**** WI 4-H Project Guide

A 4-H project is an area you want to learn more about during the year. There are projects on just about any topic you would like to study and explore, from art to woodworking, from computers to rabbits, from sewing to mechanical science. Check out the NEW 4-H Project Guide:

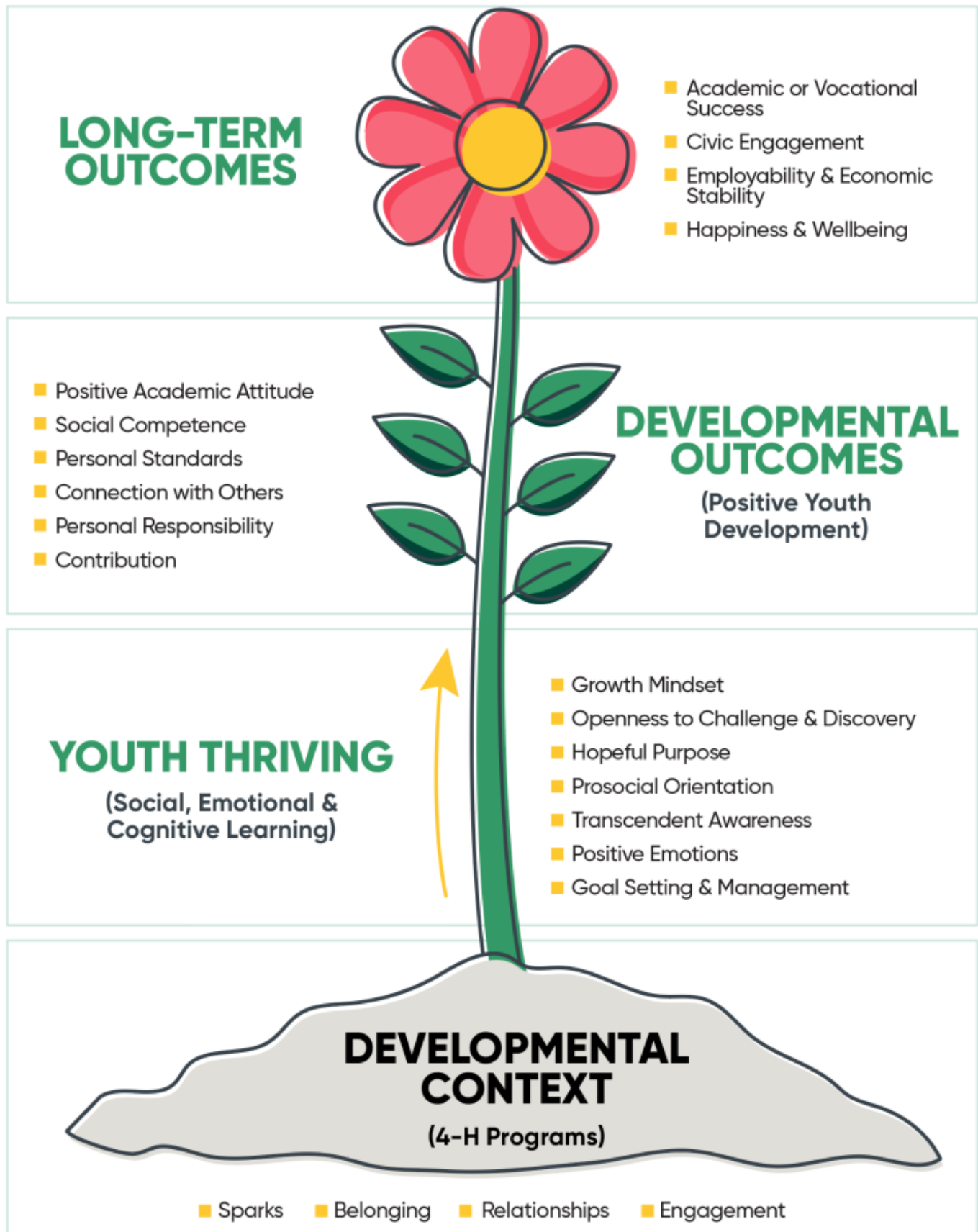
https://4h.extension.wisc.edu/files/2025/05/WI4HProjectGuide_5-28-25_WEB.pdf

*Lafayette County 4-H Projects should be updated in 4HOnline by February 1, 2026, to ensure correct listings on communication lists for county project leaders. Direct questions to the Lafayette County Extension Office at (608) 776-4820.



<u>What counts?</u>	<u>Participation?</u>	<u>How do they count?</u>
Monthly Club Meetings	County-level	Each meeting = 1 educational experience
Record Book	County-level	Completion = 1 educational experience
County Shooting Sports Clin-	County-level	3 clinics = 1 educational experience
4-H Camp	County-level	Attendance = 2 educational experiences
Day in the Arts	County-level	Participation = 1 educational experience
4-H SPARK Days	County-level	Participation = 1 educational experience/event
4-H SPARK Day Presenter	County-level	Leading the Event = 2 educational experiences
4-H Ambassadors	County-level	Attendance & Participation = 3 educational experiences
Discovery Days (Cloverbud/	County-level	Attendance & Participation = 1 educational experience/event
"Experience Series" Events	County-level	Attendance & Participation = 1 educational experience/event
County 4-H Horse Clinics	County-level	3 clinics = 1 educational experience
County Dog Project Clinics	County-level	3 clinics = 1 educational experience
YQCA	County-level	In-person or Online = 1 educational experience
4-H Camp Counselor	County-level	Participation = 3 educational experiences
Library Collaborations w/4-H	County-level	Attendance & Participation = 1 educational experience
Youth Project Leader	County-level	Participation = 1 educational experience/project area based on
4-H Adopt A Cow	County-level	Participation = 1 educational experience
Area Animal Science Days	County/State level	Attendance & Participation = 1 educational experience
State Shooting Sports Events	State level	Each day = 1 educational experience
WI 4-H Arts Camp	State level	Attendance = 2 educational experiences
Art Beat!	State level	Attendance = 2 educational experiences
State Arts Ambassadors	State level	Participation = 3 educational experiences
State Dog Agility Show	State level	Attendance & Participation = 2 educational experiences
State Dog Obedience &	State level	Attendance & Participation = 2 educational experiences
State Dog Quiz Bowl	State level	Attendance & Participation = 1 educational experiences
State 4-H Gymkhana	State level	Attendance & Participation = 1 educational experiences
State Horse Expo	State level	Attendance & Participation = 1 educational experiences
4-H Hunt & Dressage Show	State level	Attendance & Participation = 2 educational experiences
Fall Forum	State level	Attendance & Participation = 3 educational experiences
Ignite by 4-H	State level	Attendance & Participation = 3 educational experiences
Summer Academy	State level	Participation = 3 educational experiences
National 4-H Congress	State level	Participation = 3 educational experiences
WI 4-H Leadership Council	State level	Attendance & Participation = 3 educational experiences
State 4-H Horse Education	State level	Attendance & Participation = 1 educational experiences/event
American Spirit East	State level	Participation = 3 educational experiences
CWF (Citizenship Washington	State level	Participation = 3 educational experiences
YPCL	State level	Attendance & Participation = 2 educational experiences
Restorative Justice Summit	State level	Attendance & Participation = 1 educational experience
Dairy Quiz Bowl	State level	Attendance & Participation = 1 educational experience
State Dairy Judging Contest	State level	Attendance & Participation = 1 educational experience
State Livestock Judging Con-	State level	Attendance & Participation = 1 educational experience
4-H Meats Judging Conest	State level	Attendance & Participation = 1 educational experience
4-H Livestock Skill-a-thon	State level	Attendance & Participation = 1 educational experience
4-H Livestock Quiz Bowl	State level	Attendance & Participation = 1 educational experience
Space Camp	State level	Attendance & Participation = 3 educational experiences
Advanced Space Camp	State level	Attendance & Participation = 3 educational experiences

4-H Thriving Model



Explore: 4-H Edition—December 2025



The graphic features a light beige background with a subtle white crinkled paper texture. Scattered throughout are several gold-colored starburst ornaments of varying sizes. At the top center, the UW-Madison Extension logo is displayed, consisting of a red shield with a white 'W' and a green four-leaf clover with white 'H's, with the text 'UW-MADISON EXTENSION' below it. The main title '4-H Explore Edition' is written in a large, elegant black script font. Below this, the words 'SCRABBLE' and 'ORNAMENTS' are written in a large, black, all-caps serif font. On the left and right sides, there are vertical decorative elements that look like hanging ornaments. Each has a black circular top, a plaid fabric body, and a red bow at the bottom. The left ornament has wooden Scrabble tiles spelling 'QUIRT' (Q₁₀, U₁, I₁, R₁, T₁). The right ornament has tiles spelling 'MOM' (M₃, O₁, M₃). The entire graphic is framed by a thin black line.

UW-MADISON EXTENSION

4-H Explore Edition

SCRABBLE ORNAMENTS

 McCoy Public Library
190 Judgement St Shullsburg

 Friday, December 5

 1:30 p.m.

Please make requests for reasonable accommodations to ensure equal access to educational programs as early as possible preceding the scheduled program, service, or activity. For communicative accommodations in languages other than English, please contact oaic@extension.wisc.edu. For communicative accommodations based on a disability, please contact Heather Lipinski Stelljes at: heather.stelljes@wisc.edu for the public.

An EEO/AA employer, University of Wisconsin-Madison Division of Extension provides equal opportunities in employment & programming, including Title VI, Title IX, the Americans with Disabilities Act (ADA) & Section 504 of the Rehabilitation Act requirements.

4-H Experience Series—December 2025



Extension
UNIVERSITY OF WISCONSIN-MADISON

4-H Experience Series



Soap Making

SATURDAY

13
DECEMBER

10:00 a.m.

at the Multipurpose Building

11974 Ames Rd, Darlington, WI

REGISTRATION REQUIRED

<https://forms.gle/YR8G2qUSCDYXUvJK9>



Cupcakes!

Come join us for

Youth Cupcake Decorating Day

Register Today!

27
Dec



**9am -
12pm**

Registration will close Dec 15, 2025.

Grades 3-6

Location of Event:

Benton Beginning Point Church
148 3rd Ave, Benton, WI 53803



Registration
Required

[https://forms.gle/
5Zj4qV1JPuNGXq
Zz7](https://forms.gle/5Zj4qV1JPuNGXqZz7)

An AA/SEO employer, University of
Wisconsin Extension provides
equal opportunities in employment
and programming, including Title VI,
Title IX and ADA requirements.



Extension
UNIVERSITY OF WISCONSIN-MADISON

YQCA

YQCA Instructor Led Training

Tuesday, December 30 at 10am
Please arrive by 9:50am

**Lafayette County Multipurpose Bldg,
11974 Ames Rd., Darlington**

You must register online, pay the \$3 fee, and complete the pre-test.
Any questions please contact Jackie McCarville at 608-576-0147



**The University of Wisconsin–Madison Division of Extension provides equal opportunities in
employment and programming in compliance with state and federal law.**
If you need an accommodation to attend this event, please contact Jackie McCarville by December 12.

Register at: <https://yqcaprogram.org>

SPARK DAYS!

Spark Days!

Come Build your own

PIÑATA



Where: Multi-Purpose Building

11974 Ames Rd, Darlington, WI 53530



When: January 10th



Time: 9:00 am – 11:30 am

Registration Required



<https://forms.gle/yhgE1we8nGwplghv7>



Extension
UNIVERSITY OF WISCONSIN-MADISON

An AA/EEO employer, University of Wisconsin-Extension provides equal opportunities in employment and programming, including Title VI, Title IX and ADA requirements

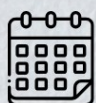
SPARK DAYS!

Spark Days!

DIY WOOD SIGNS



Where: Multi-Purpose Building
11974 Ames Rd, Darlington, WI 53530



When: January 17th



Time: 9 am - 12 pm

COST \$10
PER
PERSON

Registration Required



Extension
UNIVERSITY OF WISCONSIN-MADISON

An AA/EEO employer, University of Wisconsin-Extension provides equal opportunities in employment and programming, including Title VI, Title IX and ADA requirements

4-H Experience Series—January 2026



Extension
UNIVERSITY OF WISCONSIN-MADISON

4-H Experience Series

TALLOW BODY BUTTER

SATURDAY

24
JANURARY

10:00 a.m.

at the Multipurpose Building

11974 Ames Rd, Darlington, WI

REGISTRATION REQUIRED

[https://forms.gle/xRzw
HywzD1QcoB9qZ](https://forms.gle/xRzwHywzD1QcoB9qZ)



WI 4-H Opportunities



LAST CALL
NATIONAL 4-H CONFERENCE

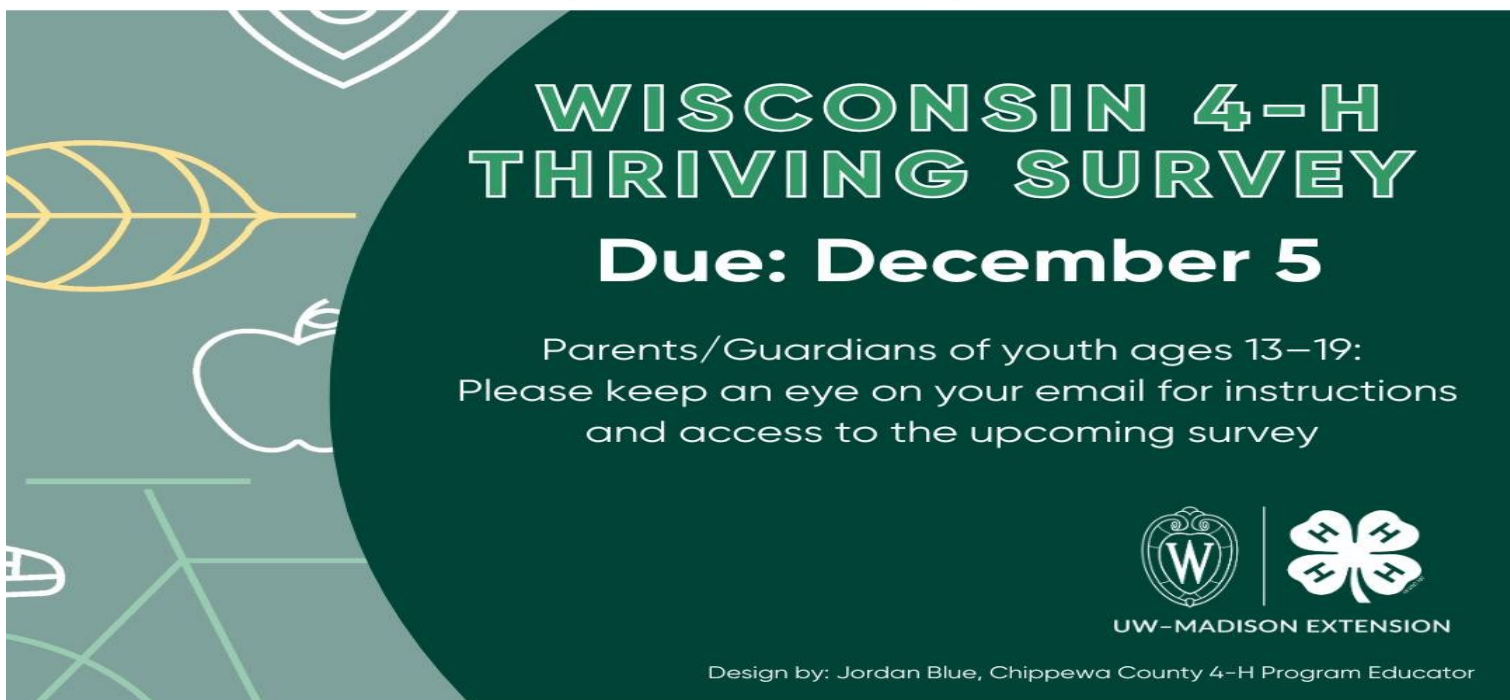
Applications open until December 1st

- April 10–15, 2026
- Washington DC
- 10th–12th Grade
- \$2,000 to attend

The poster features a green background with colorful abstract shapes (yellow, red, orange) and a white line drawing of the U.S. Capitol building. Arrows point from the application details to the right.



Positive Youth Development Institute
DIVISION OF EXTENSION
UNIVERSITY OF WISCONSIN-MADISON



**WISCONSIN 4-H
THRIVING SURVEY**

Due: December 5

Parents/Guardians of youth ages 13–19:
Please keep an eye on your email for instructions
and access to the upcoming survey

The poster has a dark green background with a large white circle containing the text. On the left, there are faint white line drawings of a leaf and an apple. At the bottom right are the UW-Madison and 4-H logos.



UW-MADISON EXTENSION

Design by: Jordan Blue, Chippewa County 4-H Program Educator

Want a chance to win a **\$25 gift card**? Complete the survey to enter!

WI 4-H Opportunities

Saturday, December 13th | 12pm

Oshkosh Arena | 1212 S Main Street, Oshkosh, WI



Join us for 4-H Day with the Wisconsin Herd!

Just for 4-H Families:

- Pre-Game Watch sitting courtside & autographs
- High Five Tunnel with Herd Players



The University of Wisconsin–Madison Division of Extension provides equal opportunities in employment and programming in compliance with state and federal law.



WI 4-H Opportunities

APPLY TO JOIN 4-H DRAMA COMPANY



The **Drama Company** Creates a stage performance involving acting, song, and dance in the five days leading up to the Summer Academy. Show content is a collaborative effort between company members and their directors. You are welcome to apply to be a performer, technician, or stage manager.

Must be in **grades 9-12** at the time of the application.

Apply join the Ambassador Teams by **Dec. 15th!**



WISCONSIN 4-H ARTS AMBASSADORS



April 23-27,
2026



Huntsville,
Alabama

Wisconsin 4-H SPACE CAMP

OPEN TO YOUTH GRADES 6-8

Get involved in:

- Simulated Space Missions
- Learning and using Space Simulators
- Building and launching your own model rockets
- Real space training simulation
- etc.

Cost is \$1300

**Registration open from Nov 15-Dec 15
via 4HOnline**



Positive Youth Development Institute
DIVISION OF EXTENSION
UNIVERSITY OF WISCONSIN-MADISON

WI 4-H Opportunities



APPLICATIONS OPEN FOR LEADERSHIP AMBASSADORS

The **Wisconsin 4-H Leadership Ambassadors** will advocate for Wisconsin 4-H and engage in opportunities to build personal leadership skills and encourage others to grow their leadership potential.

Must be in **grades 9-12** at the time of the application.

Apply join the Ambassador Teams by **Dec. 15th!**

NEW WINTER ACADEMY VIRTUAL



Grades 8-10



- January 21, 2026
- January 28, 2026
- February 4, 2026

Free to attend!



Completion of the Winter Academy program will earn participants a 30% coupon code off registration for Summer Academy in the same year!



Positive Youth Development Institute
DIVISION OF EXTENSION
UNIVERSITY OF WISCONSIN-MADISON

WI 4-H Opportunities

SAVE THE DATES

STATE 4-H LIVESTOCK EVENTS

4-H MEATS JUDGING CONTEST
JANUARY 31, 2026

SKILLATHON AND QUIZ BOWL
MARCH 21, 2026

**BOTH EVENTS HELD AT THE
UW MADISON CAMPUS**



Extension
UNIVERSITY OF WISCONSIN-MADISON



SAVE THE DATE

STATE 4-H DAIRY QUIZ BOWL

FEBRUARY 7, 2026

**UW GREEN BAY
STEM INNOVATION BUILDING**



Extension
UNIVERSITY OF WISCONSIN-MADISON

WI 4-H Opportunities

SAVE THE DATES

STATE 4-H HORSE EVENTS

HORSE EDUCATION DAYS

MAY 2 & 3, 2026

STATE HUNT AND DRESSAGE SHOW

JUNE 26, 27, & 28, 2026

STATE GYMKHANA SHOW

SEPTEMBER 12, 2026

STATE HORSE EXPO SHOW

SEPTEMBER 18, 19, & 20, 2026



Extension
UNIVERSITY OF WISCONSIN-MADISON

WI State 4-H

What ELSE does 4-H have to offer?

WI 4-H Arts Ambassadors:

Dairy & Animal Science Program:

- * [Area Animal Science Days](#)
- * [Dairy Quiz Bowl](#)
- * [State Dairy Judging Contest](#)
- * [James W. Crowley Dairy Leadership Award](#)

Dog Program:

- * [State Dog Agility Show](#)
- * [State Dog Obedience & Showmanship Show](#)
- * [State Dog Quiz Bowl](#)

Horse Program:

- * [State 4-H Gymkhana](#) -
- * [State 4-H Horse Education Days, Horse Bowl, & Hippology Contest](#)
- * [State Horse Expo](#)
- * [State 4-H Horse Leader's Conference](#)
- * [4-H Hunt & Dressage Show](#)
- * [Midwest Horse Fair Tack Sale](#)

Leadership:

- * [WI 4-H Leadership Council](#)
- * [Youth as Partners in Civic Leadership](#)
- * [Restorative Justice Summit](#)
- * [Fall Forum](#)
- * [Summer Academy](#)

Livestock Program:

- * [Area Animal Science Days](#)
- * [State Livestock Judging Contest](#)
- * [Meats Judging Contest](#)
- * [Livestock Quiz Bowl & Skill-a-Thon Contest](#)

Global Citizenship:

- * [International Exchange](#)
- * [Summer Outbound Travel Program](#)
- * [Summer Inbound Hosting Program](#)

Shooting Sports:

- * [Competitive Shoots](#)

Travel Experiences:

- * [American Spirit East](#)
- * [Citizenship Washington Focus](#)
- * [Space Camp](#)
- * [National 4-H Conference](#)
- * [National 4-H Congress](#)

Awards & Scholarships:

- * [Key Awards](#)
- * [Crowley Dairy Leadership Award](#)
- * [WI 4-H Foundation Scholarship](#)



Lafayette County Agriculture & Extension Education Committee:

Lee Gill
Rita Buchholz
Mark Pinch
Donna Flannery
Joe Schutte

4-H PLEDGE

I pledge my head to clearer thinking,
My heart to greater loyalty,
My hands to larger service,
And my health to better living,
For my club, my community, my country, and my world.

THE LAFAYETTE MARQUEE—4-H NEWSLETTER

UNIVERSITY OF WISCONSIN EXTENSION

700 Main Street, Suite #2
608-776-4820
www.lafayette.uwex.edu

Office Hours:

Monday through Friday
8:00 a.m. to 4:30 p.m.

Lafayette County University of Wisconsin Extension Office Staff:

Jenna Phillips, Administrative Assistant, jenna.phillips@wisc.edu
Hailee Kammerud, 4-H Youth Development Educator, hailee.kammerud@wisc.edu
Bob Wiegel, Human Development & Relationships Educator, rwiegel@wisc.edu
Jordyn Sattler, Agriculture Educator - Crops & Soils, jordyn.sattler@wisc.edu
Jackie McCarville, Agriculture Educator - Dairy, jackie.mccarville@wisc.edu
Vacant, Agriculture Educator - Livestock,
Lynn Perkins, Area 17 Extension Director, lynn.perkins@wisc.edu
Jenna Phillips, Farmers Market Coordinator, jenna.phillips@wisc.edu