

# The Lafayette Marquee

## 4-H Newsletter

**December 2023**

### Why 4-H?

4-H centers around the four H's—head, heart, hands, and health. Each year more than 69,000 youth are involved with 4-H and over 8,500 volunteers serve those youth. By being involved in 4-H youth are:

- ◆ 4 times more likely to make contributions to their communities
- ◆ 2 times more likely to be civically active
- ◆ 2 times more likely to participate in out-of-state science programs
- ◆ 2 times more likely to make healthier choices

So why join the movement? 4-H values: being yourself, belonging together, discovering skills, building connections, exploring new opportunities, and giving back to your community whether rural, urban, or suburban communities.

What opportunities does 4-H offer? Whether youth participate at the local club level, county level, state, or national there is something for everyone. 4-H allows for youth to explore a wide variety of project areas, camps, and experiences. Simply take the first step and reach out to start your journey in 4-H and to experience all that it has to offer.

### Inside this issue:

Calendar	2
4-H Pledge	3
Fill the Floral Hall	3
Local Opportunities	4-6
4-H State Opportunities	7-8
Contests	9-10
4-H Shooting Sports	11
4-H Volunteers	12
4-H Thrive Model	13
WI 4-H Offerings	14
4-H Camp/Hours	15
Contacts/Office Hours	16

### CONTACT US:

Lafayette County Extension Office  
700 Main Street, Suite #2  
Darlington, WI 53530  
608-776-4820

<https://lafayette.extension.wisc.edu>

Find Lafayette County UW

Extension on Facebook!

Hailee Kammerud,

4-H Youth Development Educator

[hailee.kammerud@wisc.edu](mailto:hailee.kammerud@wisc.edu)



## 4-H EVENTS

### Calendar of Events

<b>December 2023</b>	1-31	4H Online Registration <b>OPENS</b> for Citizenship Washington Focus, Washington D.C.
	01	SPACE CAMP Registration— <b>OPEN</b>
	01	American Spirit East—Notifications sent out
	16	Leadership Training w/Grant County ~ Pioneer Farm
	16	Lafayette County Fair Steer Weigh-In
	28	YQCA Class (Multipurpose Building)
	<b>January 2024</b>	02
05		American Spirit East Payments <b>DUE</b>
07		4-H Archery Clinic ~ Belmont Schools
10		WI 4-H Foundation CELEBRATE the ARTS Art Contest <b>CLOSES</b>
15		WI 4-H State Arts Teams (Drama Company & Arts Team) Registration <b>DUE</b>
15		WI 4-H Key Award & James W. Crowley Award Applications <b>DUE</b>
16		WI STATE 4-H Drama Company & Arts Teams Applications <b>DUE</b>
<b>February 2024</b>	21	4-H Archery Clinic ~ Belmont Schools
	02	4-H Enrollment <b>CLOSES</b> for <b>NEW</b> members
	04	4-H Archery Clinic ~ Belmont Schools
	18	4-H Archery Clinic ~ Belmont Schools
<b>March 2024</b>	26	Winter Photography Challenge Photos <b>DUE</b>
	10	4-H Archery Clinic ~ Belmont Schools
	15-17	4-H ArtBEAT! Camp - Upham Woods, WI Dells (grades 3-5)
<b>April 2024</b>	17	4-H Archery Clinic ~ Belmont Schools
	07	4-H Archery Clinic ~ Belmont Schools
	18-22	Space Camp - Huntsville, AL (grades 6-8)
	21	4-H Archery Clinic ~ Belmont Schools
<b>May 2024</b>	19-24	National 4-H Conference - Washington D.C. (grades 10-12)
	05	4-H Archery Clinic ~ Belmont Schools
<b>June 2024</b>	14-23	American Spirit East Travel
	21-30	American Spirit East Travel
	24-28	Summer Academy - UW-Madison Campus



---

## 4-H Pledge/FtFH

---

### 4-H PLEDGE

I pledge my head to clearer thinking,  
My heart to greater loyalty,  
My hands to larger service,  
And my health to better living,  
For my club, my community, my country, and my



**HEAD**



**HEART**



**HANDS**



**HEALTH**

**Head** stands for decision making, planning, organizing, problem solving and using knowledge throughout life.

4-H provides young people the opportunity to recognize and develop their interests, “sparks”, through curriculum and project-based learning in partnership with caring adults, and, strengthens post-secondary pathways.

---

## Fill the Floral Hall

\* Next Gathering: January 2024

\* We'll provide the space, time, and skilled expertise


\* Check Extension's website and the Facebook page

\* If you are interested in leading a project area, please reach out to the

Extension Office OR Lynnette Boatman at [lhboatman@gmail.com](mailto:lhboatman@gmail.com)

Local Opportunities

# Grant & Lafayette County Leadership Training

 Saturday, December 16, 2023  
9:00am - 11:30am

 Pioneer Farm  
(29200 College Farm Rd., Platteville, WI 53818)

Open to Club Leaders, Volunteer Leaders & 4-H Club Officers!  
No Affiliated Cost!

Please register by:  
Saturday, December 9, 2023

This is to learn about specific roles and responsibilities associated with planning, organizing, and executing successful 4-H club and group meetings.

*An AA/EEO employer, University of Wisconsin-Extension provides equal opportunities in employment and programming, including Title VI, Title IX and ADA requirements*



Local Opportunities

Lafayette County Fair  
Steer Weigh-In & Identification



Saturday, December 16, 2023  
9:00-11:30 a.m.



December 28th at 10am

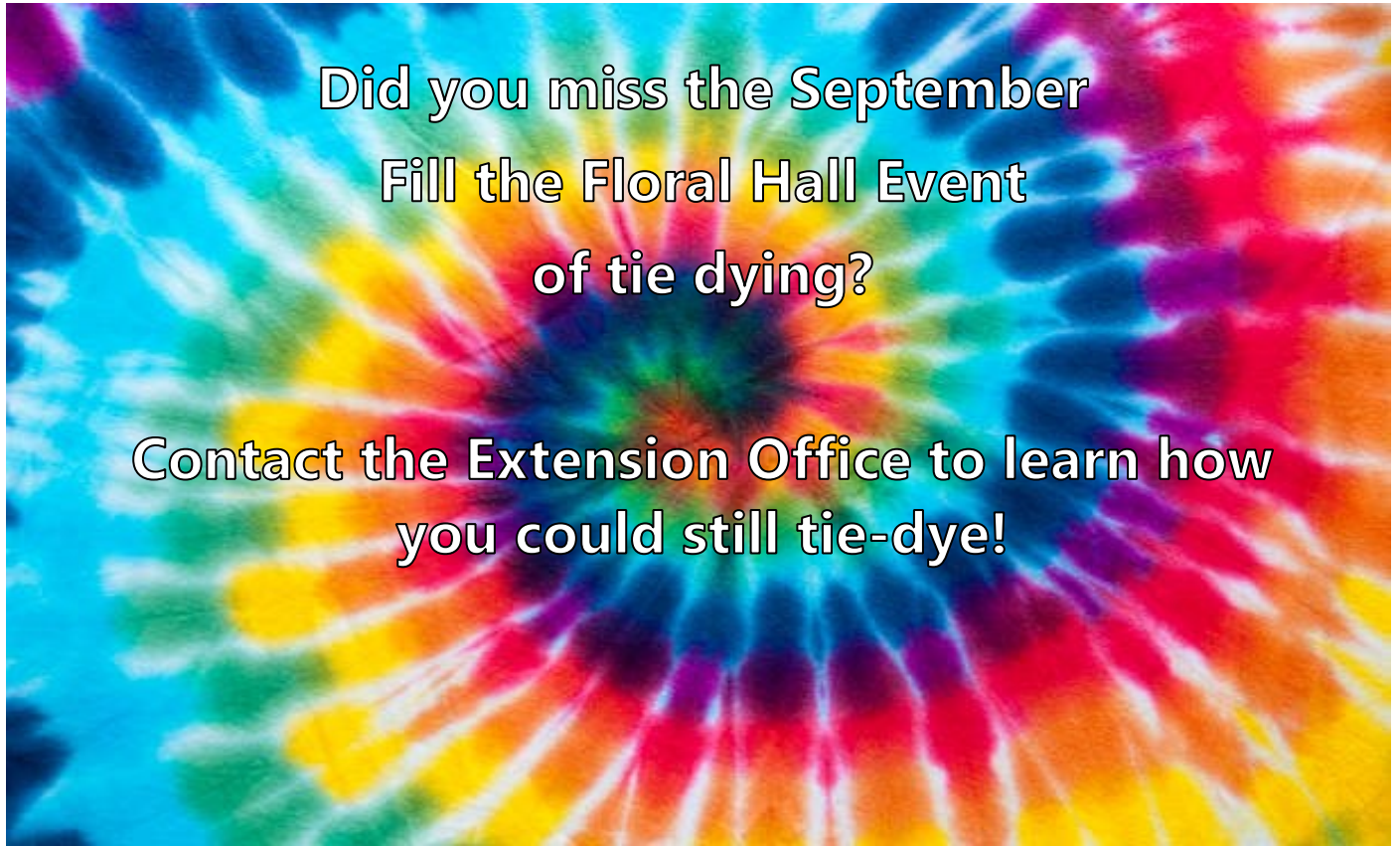
Lafayette County Multipurpose Building  
11974 Ames Rd.  
Darlington

- » <https://yqcaprogram.org>
- » Any questions, please contact Jackie McCarville at 608-328-9440

You MUST register online, pay the \$3 fee, and complete the pretest

An EEO/AA employer, University of Wisconsin-Madison Division of Extension provides equal opportunities in employment and programming, including Title VI, Title IX, the Americans with Disabilities Act (ADA) and Section 504 of the Rehabilitation Act requirements.

Local Opportunities



*Love mesh wreaths?*

*Did you miss the November  
wreath-making event?*

*Still interested in learning the art of mesh  
wreath making?*

*Contact the Extension Office to learn more  
about the available wreath kits  
to make your own  
Decorated Mesh Wreath.*



Lafayette County Extension

(608) 776-4820

[Brandi.kent@wisc.edu](mailto:Brandi.kent@wisc.edu)

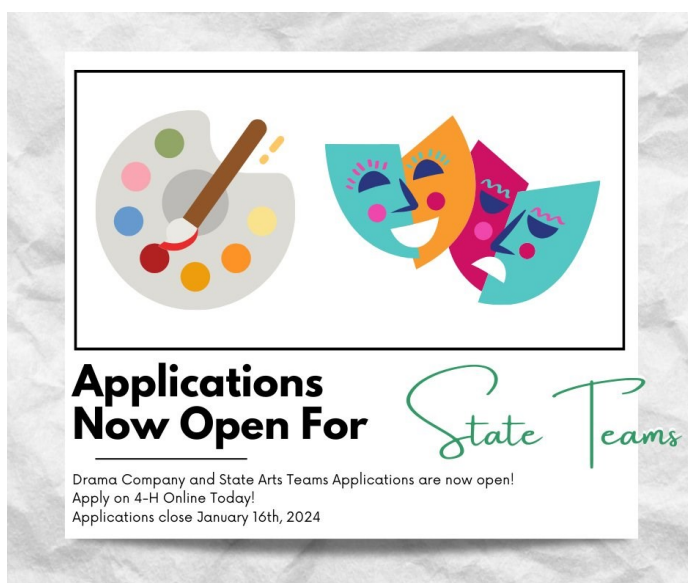
## State Opportunities

### 4-H Thriving Survey -- Check Your Inbox!

Watch your email inbox (the one you use with 4H Online) for your link to participate in the Wisconsin 4-H Thriving Survey! Youth ages 13-18 will receive a link to share your input about your 4-H experiences. The results will help us evaluate and communicate how 4-H helps young people to learn new things, develop leadership skills, manage goals, set high personal standards, create positive academic attitudes, and other skills that lead to long-term success in life.

The survey was sent to all Wisconsin 4-H members by e-mail in the first week of November and reminders have been sent as well. **The survey link will be open until December 1.** Youth who complete the survey will be entered into a raffle to win a \$25 gift card. Fill out the survey to help Wisconsin achieve a 30% response rate.

For more information on the 4-H Thriving Model and some of the results from the 2022 4-H Thriving Study in Wisconsin, please visit [4-H Thriving Model – Wisconsin 4-H](#)



The 2024 State Arts Team and Drama Company applications are NOW OPEN until [January 16th, 2024.](#)

You can apply by clicking here:

State Arts Team:

<https://23wi4hartteam.4honline.com/>

Drama Company:

<https://23wi4hdco.4honline.com/>

---

## WI 4-H State Opportunities

---



### Wisconsin 4-H Foundation Celebrates the Arts

The Wisconsin 4-H Foundation provides support for arts and communications programs that encourage youth to develop strong leadership, creative and communications skills. Each year the Foundation highlights 4-H artists through the Celebrate the Arts art contest.

**Contest Runs: November 1, 2023-January 15, 2024**

Check out the website for more information, contest rules, and deadlines.



4-H Connects online! Follow Wisconsin 4-H on Facebook and Instagram or visit <https://4h.extension.wisc.edu/virtual-learning-community/> for more information on dates of specific meetings.

**Registration can be completed in 4HOnline.**



Contests



# WINTER PHOTOGRAPHY CHALLENGE



Submit your **BEST Winter Photos**  
of Lafayette County

**Open to ALL Lafayette County Residents**

**Deadline: February 26, 2024**

**Photos can be: Color, Black & White, Sepia, or Computer edited**

**Submit to: [brandi.kent@wisc.edu](mailto:brandi.kent@wisc.edu)**



*An AA/EEO employer, University of Wisconsin-Extension provides equal opportunities in employment and programming, including Title VI, Title IX and ADA requirements*



UW-MADISON EXTENSION

## Contests

### 2024 Conservation Poster Contest



#### Details

- Open to grades K-12; public, private or home school students
- Each poster must go through the following contest process: Local/County, Area, State, Nationals.
- The National Poster Contest theme is: **"May the Forest be With You, Always"**

#### Contest Rules

- Poster size must be 12" x 18" or 14" x 22".
- The 2024 National Contest Theme, **"May the Forest be With You, Always"**, must be written on each poster.
- All posters shall be created by an individual student, rather than a team of students.
- Any media may be used: paint, crayon, colored pencil, charcoal, stickers, paper or other materials on regular posters. (Computer-generated posters will not be accepted)
- To be eligible for judging, each entry must have a completed and signed entry form attached to back.

### Posters due by December 15th!

#### Poster Evaluations

Conservation Message 50%

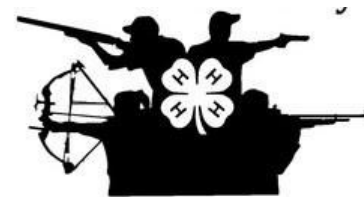
Visual Effectiveness 30%

Originality 10%

## 4-H Shooting Sports

# Lafayette County Shooting Sports

Disciplines: Archery, Air Rifle, Air Pistol, .22 Rifle,  
.22 Pistol, Shotgun/Trap



Shooting Sports

Gun Clinic Dates: **FALL DATES FORTHCOMING**

\*\*IF you are interested in participating, please make sure to ENROLL in the Shooting Sports Project Area; specifically, Air Rifle, Air Pistol, .22 Rifle, Trap, and **\*\*NEW\*\*** this year .22 Pistol.

Email communications will be sent to the parents of those youth who are enrolled in the project area(s). If you have questions, please reach out to the Extension Office to be placed on the rosters to receive the email notifications for practices.

\*REMINDER\* **ALL youth** participating in live-round disciplines (.22 Rifle, .22 Pistol, and Shotgun/Trap) **must** be 12 years old. There are **no** exceptions!!

<https://lafayette.extension.wisc.edu/4-h-youth-development/projects/shooting-sports/>

## Lafayette County 4-H Archery

Clinic Dates: **January** 7, 21; **February** 4, 18; **March** 10, 17; **April** 7, 21; **May** 5

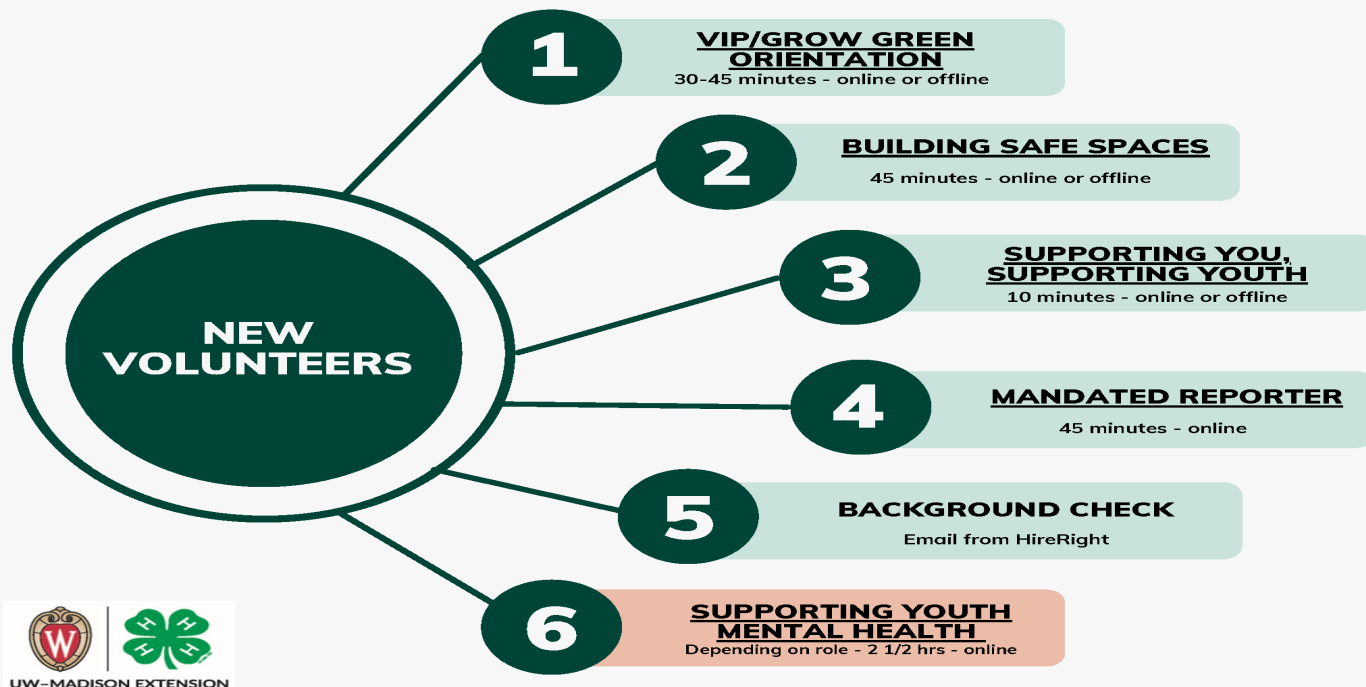
Location: Belmont Community Schools (646 E. Liberty St. Belmont, WI)



**\*\*Make sure that you're enrolled in Archery by selecting ARCHERY under "Projects" on 4H Online for each interested youth. This will guarantee that you'll receive communications for the Archery Project.**

**\*\* If interested in volunteering, please contact Hailee at the Extension Office to register for WI State 4-H Certification Trainings. [hailee.kammerud@wisc.edu](mailto:hailee.kammerud@wisc.edu)**

## NEW & Returning 4-H Volunteers

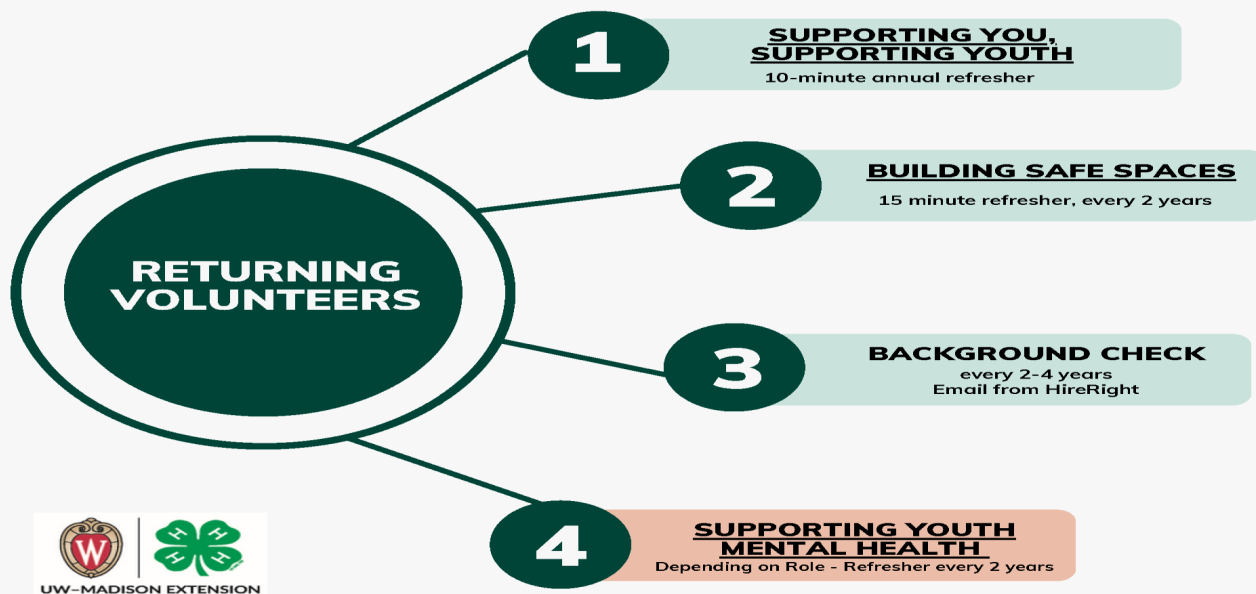


### How can I volunteer within Lafayette County 4-H?

#### Volunteering Options-

- Activity/Event Volunteer
- Adult Advisor/Chaperone
- Club Enrollment Coordinator
- Club Leader
- Committee Volunteer
- Project Leader

Your volunteer association within WI 4-H matters, please select your volunteering options based on your areas of commitment. <https://lafayette.extension.wisc.edu/4-h-youth-development/volunteers/>



## 4-H Volunteers/Thrive Model

### Volunteers MAKE 4-H possible!

The most important qualifications are:

- a desire to work with young people to help them learn new things and gain life skills; and
- wanting to provide youth with positive experiences in a safe and welcoming environment.

#### Volunteering Gains:

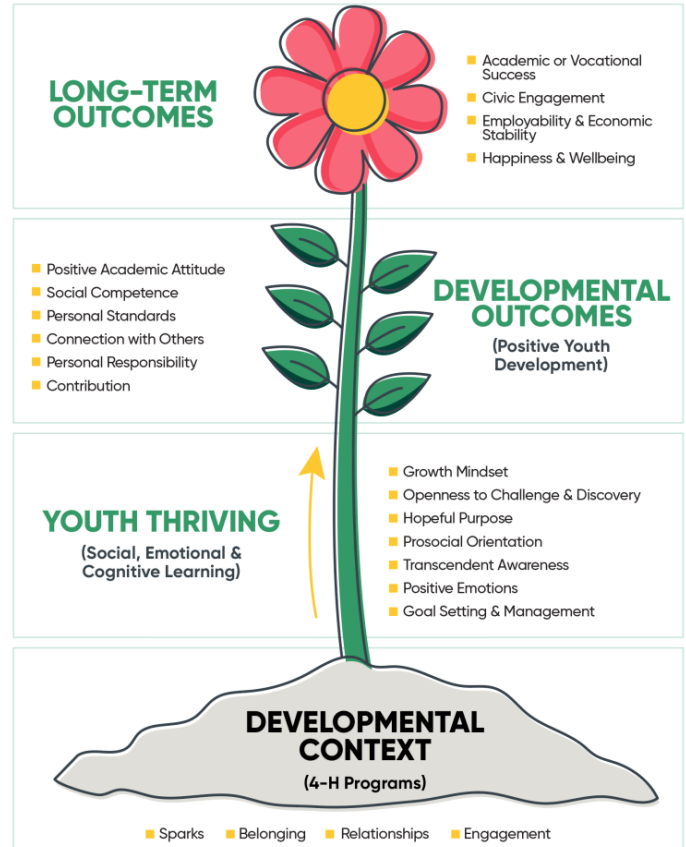
- ◆ Skills in Teaching
- ◆ Leading Effective Meetings
- ◆ Developing Communication Skills

#### ~ Communities Impacted~

- \* Stronger Communities
- \* Community Connections
- \* Increased Civic Involvement
- \* Improved Health of Communities

#### Volunteering Options-

- Activity/Event Volunteer
- Adult Advisor/Chaperone
- Club Enrollment Coordinator
- Club Leader
- Committee Volunteer
- Project Leader



### 4-H Thriving Model

The 4-H Thriving Model is the theory of change for positive youth development in 4-H. The model illustrates the process of positive youth development in 4-H programs by connecting high quality program settings to the promotion of youth thriving.

#### Developmental Context:

#### Where youth can belong and grow!

High quality 4-H program settings provide youth a place to belong, matter and explore their personal spark. High quality settings foster developmental relationships with youth, relationships that express care, challenge growth, and share power.

## WI State 4-H

### What ELSE does 4-H have to offer?

#### Communication Arts:

- \* [Art Lab](#)
- \* [State Arts Teams](#)

#### Dairy & Animal Science Program:

- \* [Area Animal Science Days](#)
- \* [State Dairy Judging Contest](#)

#### Dog Program:

- \* [State Dog Agility Show](#)
- \* [State Dog Obedience & Showmanship Show](#)
- \* State Dog Quiz Bowl

#### Horse Program:

- \* [State 4-H Gymkhana](#) -
- \* [State 4-H Horse Education Days, Horse Bowl, & Hippology Contest](#)
- \* [State Horse Expo](#)
- \* [State 4-H Horse Leader's Conference](#)
- \* [4-H Hunt & Dressage Show](#)
- \* [Midwest Horse Fair Tack Sale](#)

#### Leadership:

- \* [Spark Days](#)

#### Livestock Program:

- \* [Area Animal Science Days](#)
- \* [State Livestock Judging Contest](#)
- \* [Meats Judging Contest](#)
- \* [Livestock Quiz Bowl & Skill-a-Thon Contest](#)

#### Global Citizenship:

- \* [International Exchange](#)
- \* [Summer Outbound Travel Program](#)
- \* [Summer Inbound Hosting Program](#)

#### Shooting Sports:

- \* [Competitive Shoots](#)

---

**4-H CAMP/ Hours Update**

---

## Grant & Lafayette County 4-H C A M P

June 18-21, 2024

Upham Woods, WI Dells



Open to 4-H youth  
in 3rd–7th grades.  
Registration will  
open on March 1st  
in 4H Online.

### CAMP COUNSELORS... NEEDED!

Applications OPEN December 1st and will be accepted until January 2nd, 2024.

Return applications to the Lafayette County Extension Office at

700 Main St. Darlington, WI 53530 OR

email to: [hailee.kammerud@wisc.edu](mailto:hailee.kammerud@wisc.edu)

2024 4-H Camp Counselor Application (MS Word)

2024 4-H Camp Counselor Application (pdf)

---

#### Holiday Hours:

— Closed—

Monday, December 25, 2023

Tuesday, December 26, 2023

Monday, January 1, 2024

Tuesday, January 2, 2024



**Lafayette County Agriculture & Extension Education Committee:**

Lee Gill  
Rita Buchholz  
Kriss Marion  
Jeff Berget  
Tim Olmstead

***4-H PLEDGE***

I pledge my head to clearer thinking,  
My heart to greater loyalty,  
My hands to larger service,  
And my health to better living,  
For my club, my community, my country, and my world.

**THE LAFAYETTE MARQUEE—4-H NEWSLETTER**

**UNIVERSITY OF WISCONSIN EXTENSION**

700 Main Street, Suite #2  
608-776-4820  
[www.lafayette.uwex.edu](http://www.lafayette.uwex.edu)

**Office Hours:**

Monday through Friday  
8:00 a.m. to 4:30 p.m.

**Lafayette County University of Wisconsin Extension Office Staff:**

Brandi Kent, Administrative Assistant, [brandi.kent@wisc.edu](mailto:brandi.kent@wisc.edu)  
Hailee Kammerud, 4-H & Youth Development Educator, [hailee.kammerud@wisc.edu](mailto:hailee.kammerud@wisc.edu)  
Vacant, Agriculture Educator,  
Bridget Mouchon, Health & Well-Being Coordinator, [blmouchon@wisc.edu](mailto:blmouchon@wisc.edu)  
Cristy Alvarado, Community Health Care Worker, [Cristy.Alvarado@qwaar.org](mailto:Cristy.Alvarado@qwaar.org)  
Kathy Lange, FoodWise Nutrition Educator, [kalange2@wisc.edu](mailto:kalange2@wisc.edu)  
Lynn Perkins, Area 17 Extension Director, [lynn.perkins@wisc.edu](mailto:lynn.perkins@wisc.edu)